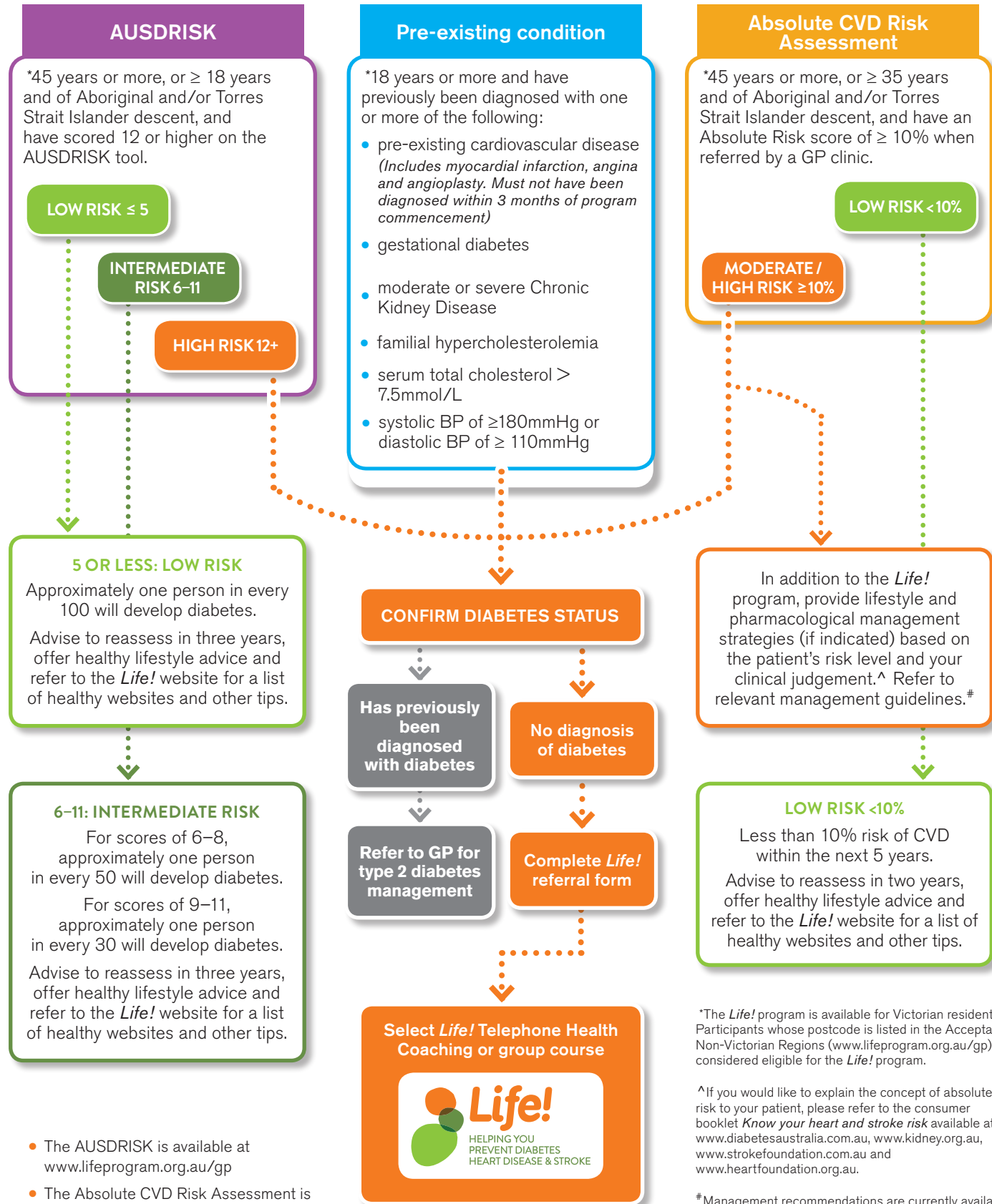


PATIENT ELIGIBILITY & REFERRAL PATHWAY

Case-finding GP clinics need to complete BOTH the AUSDRISK tool and the Absolute Cardiovascular Disease Risk Assessment with their patients prior to referral to the **Life!** program. All GP clinics are encouraged to undertake both risk assessments as standard practice in patient care. Patients cannot participate in the **Life!** program if they have diabetes, clinically active cancer or are pregnant. It is important to consider the suitability of the **Life!** program for each individual.

The patient must fit one of the following criteria to be eligible for the **Life!** program:



- The AUSDRISK is available at www.lifeprogram.org.au/gp
- The Absolute CVD Risk Assessment is available at www.cvdcheck.org.au
- The **Life!** referral form is available from www.lifeprogram.org.au/gp

*The **Life!** program is available for Victorian residents. Participants whose postcode is listed in the Acceptable Non-Victorian Regions (www.lifeprogram.org.au/gp) are considered eligible for the **Life!** program.

[^]If you would like to explain the concept of absolute risk to your patient, please refer to the consumer booklet *Know your heart and stroke risk* available at: www.diabetesaustralia.com.au, www.kidney.org.au, www.strokefoundation.com.au and www.heartfoundation.org.au.

[#]Management recommendations are currently available across separate guidelines. Useful websites include www.diabetesaustralia.com.au, www.kidney.org.au, www.strokefoundation.com.au and www.heartfoundation.org.au.